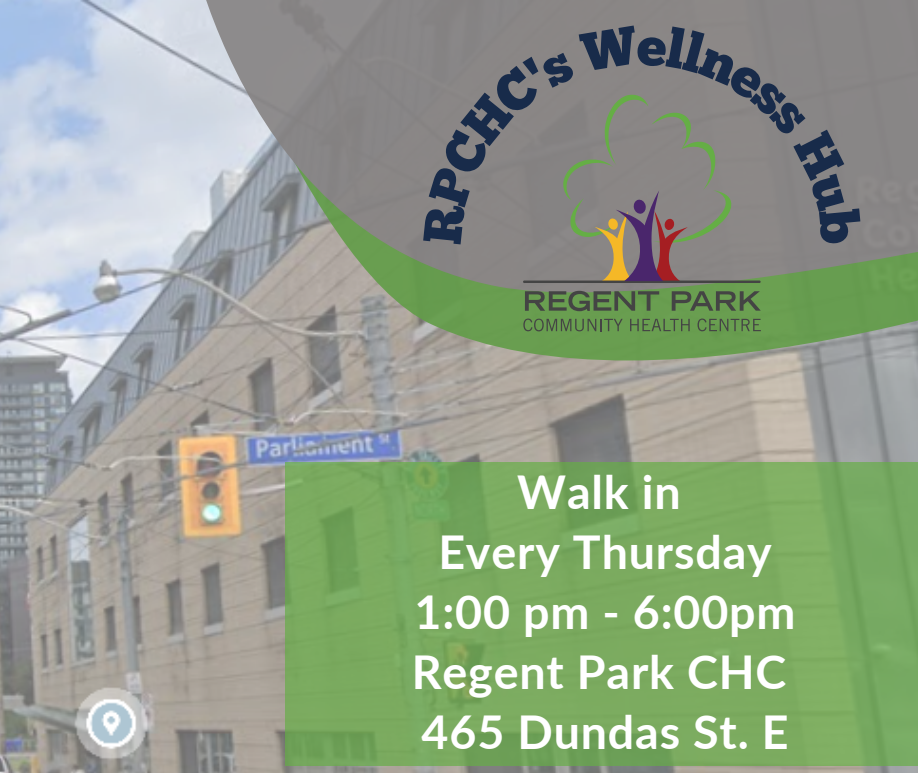
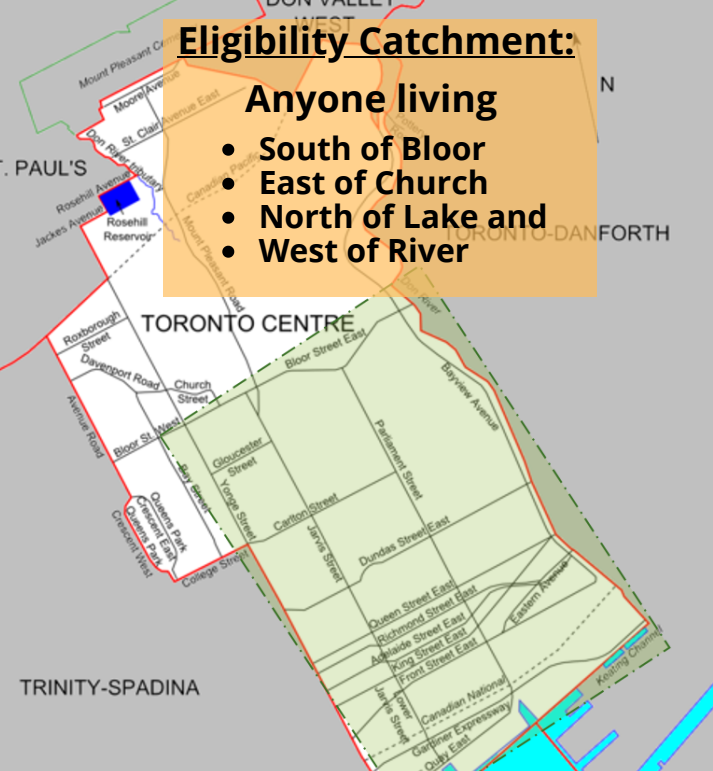


## **Eligibility Catchment:**

### **Anyone living**

- South of Bloor
- East of Church
- North of Lake and
- West of River



### **Walk in**

**Every Thursday  
1:00 pm - 6:00pm  
Regent Park CHC  
465 Dundas St. E**

## **Connect with our staff to explore referral options for**

- Primary care provider
- Cancer Screening
- Diabetes and BP Checks
- Dentistry , Chiropody and Physiotherapy
- Access to Naloxone Kits
- After-school support for students ages 11-14 (RPCHC's YEA! program)
- Supports for a successful transition from high school to post-secondary (RPCHC's Pathways to Education)
- Parenting and perinatal support (RPCHC's Early Years Social Work program)
- Housing, Food Security, Settlement, Employment and more

## **Services Offered Onsite**

- COVID-19 Vaccine
- Catch up on Adult Immunization
- Catchup Childhood Immunization
- Blood Pressure measurement



**Free Rapid Test Kits are available**

**Don't have a health card  
No status  
Uninsured  
We may be able to help  
Come talk to us**

**Please bring your health card or Interim Federal Health (IFH), if you have one**

**For more information and to book appointment  
leave a message at: (416) 364 2261 ext. 2306 (we will get back to you)  
or  
Visit: <https://regentparkchc.org/covid-19-vaccine-clinic/>**